

**JL**  
JACQUES LEMANS



Fine Jewellery

**JACQUES LEMANS EUROPAZENTRALE**

Headquarter

Jacques Lemans GmbH  
Jacques – Lemans – Straße 1  
9300 St. Veit an der Glan, Austria

Tel. +43 4212 54 44 - 0  
Fax +43 4212 54 44 - 20  
Mail [office@jacques-lemans.com](mailto:office@jacques-lemans.com)

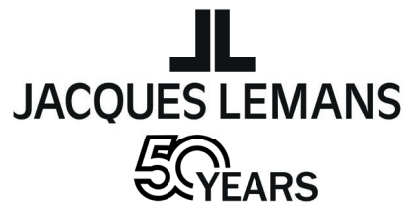
Web Online Händlerbereich  
[jacques-lemans.com/partner](http://jacques-lemans.com/partner)

**JACQUES LEMANS DEUTSCHLAND**

Mail [office.de@jacques-lemans.com](mailto:office.de@jacques-lemans.com)

Web Online Händlerbereich  
[jacques-lemans.com/partner](http://jacques-lemans.com/partner)

Errors, price or product changes as well  
as color aberration caused by printing reserved.  
© Jacques Lemans 2024



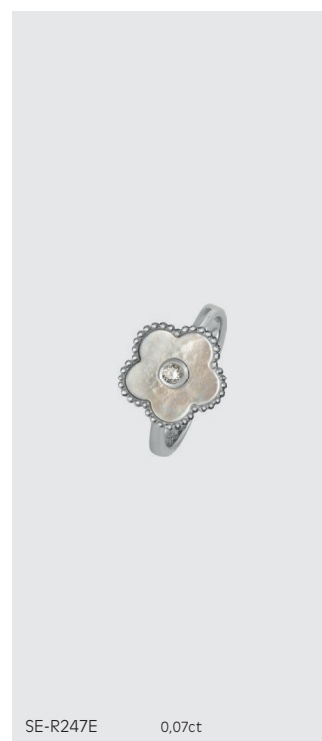
# 50 Years JACQUES LEMANS

To celebrate its 50th anniversary, Jacques Lemans presents new exclusive jewellery collections featuring delicate and colourful floral motifs and geometric shapes. The jewellery pieces are made of 925 sterling silver, one of the most popular precious metal alloys.

## **Gemstones bring emotions to life!**

White topazes sparkle and reflect light on finely crafted mother-of-pearl or strikingly coloured enamel. The elegant jewellery pieces create a wealth of sophisticated combination possibilities — both for festive occasions or as special highlights to complement your everyday outfit. The floral motifs are a tribute to the company's history and impressively reflect the values of Jacques Lemans: elegance, tradition, and innovation.

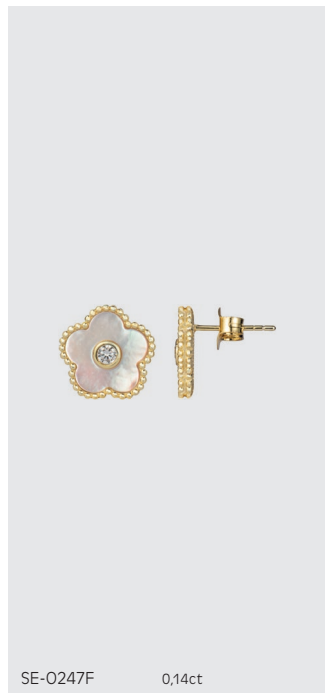
Each piece of these special collections is a testament to our commitment to offering trendy and durable items. Celebrate with us — 50 years of Jacques Lemans!



Sterling silver, Rhodium plated, mother-of-pearl, Topaz; necklace: 400 mm + 50 mm extension;  
bracelet: 170 mm + 50 mm extension, ear studs: **12 mm ø**; Ring / sizes: 52, 54, 56, 58



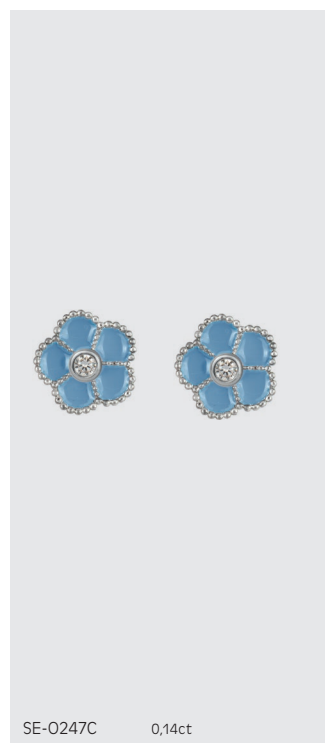
Sterling silver, Rhodium plated, mother-of-pearl, Topaz; necklace with 5 blossoms: 410 mm + 50 mm extension;  
bracelet: 170 mm + 50 mm extension



Sterling silver, 14kt gold plated, mother-of-pearl, Topaz; necklace: 400 mm + 50 mm extension;  
bracelet: 170 mm + 50 mm extension, earstud: **12 mm ø**; ring/sizes: 52, 54, 56, 58



Sterling silver, 14kt Gold plated, mother-of-pearl, Topaz; necklace with 5 blossoms: 410 mm + 50 mm extension; bracelet: 170 mm + 50 mm extension



Sterling silver, Rhodium plated, Enamel, Topaz; necklace: 400 mm + 50 mm extension;  
bracelet: 170 mm + 50 mm extension, ear stud: **12 mm ø**; Ring / sizes: 52, 54, 56, 58





SE-C2471

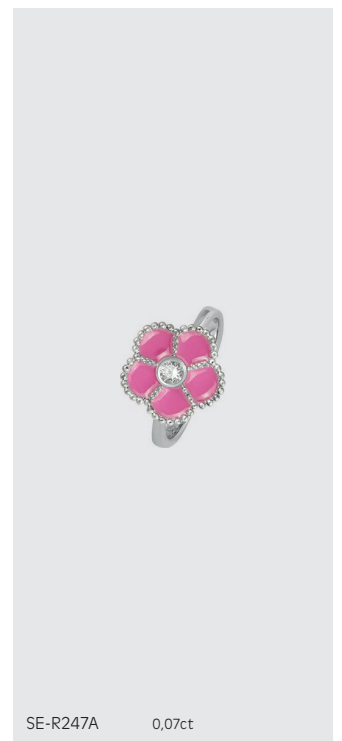
0,34ct



SE-B2471

0,34ct

Sterling silver, Rhodium plated, Enamel, Topaz; necklace: 410 mm + 50 mm extension;  
bracelet: 170 mm + 50 mm extension



Sterling silver, Rhodium plated, Enamel, Topaz; necklace: 400 mm + 50 mm extension;  
bracelet: 170 mm + 50 mm extension, ear stud: **12 mm ø**; Ring / sizes: 52, 54, 56, 58



SE-C247G

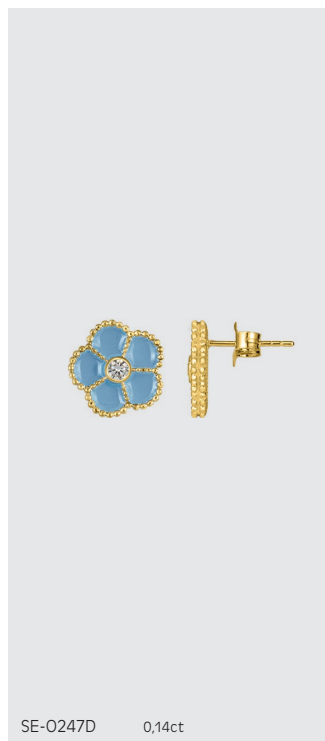
0,34ct



SE-B247G

0,34ct

Sterling silver, Rhodium plated, Enamel, Topaz; necklace: 410 mm + 50 mm extension;  
bracelet: 170 mm + 50 mm extension



Sterling silver, 14kt Gold plated, Enamel, Topaz; necklace: 400 mm + 50 mm extension;  
bracelet: 170 mm + 50 mm extension, ear stud: **12 mm ø**; Ring / sizes: 52, 54, 56, 58



SE-C247J

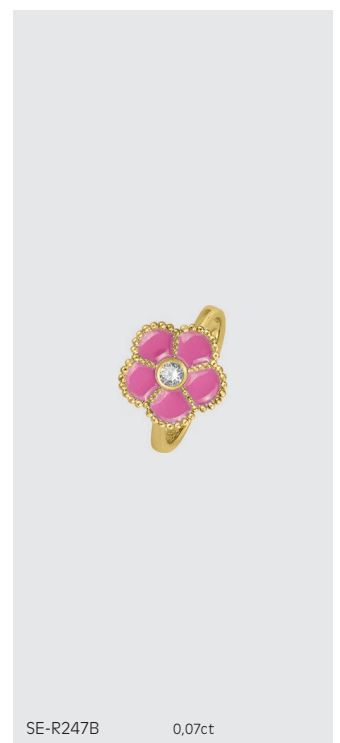
0,34ct



SE-B247J

0,34ct

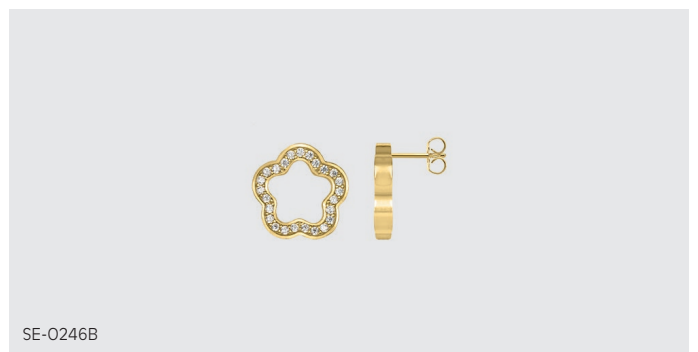
Sterling silver, 14kt Gold plated, Enamel, Topaz ; necklace: 410 mm + 50 mm extension;  
bracelet: 170 mm + 50 mm extension



Sterling silver, 14kt Gold plated, Enamel, Topaz ; necklace: 400 mm + 50 mm extension;  
bracelet: 170 mm + 50 mm extension, earstud: **12 mm ø**; Ring /sizes: 52, 54, 56, 58



Sterling silver, 14kt Gold plated, Enamel, Topaz; necklace: 410 mm + 50 mm extension;  
bracelet: 170 mm + 50 mm extension



Sterling silver, 14kt Gold plated /Rhodium plated, Topaz; necklace: 400 mm + 50 mm extension; ear stud 12 mm ø

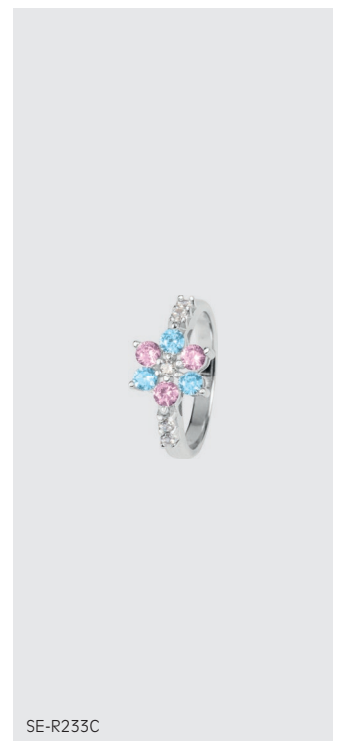
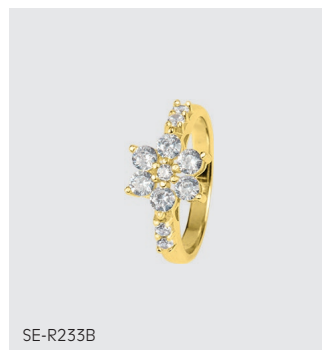
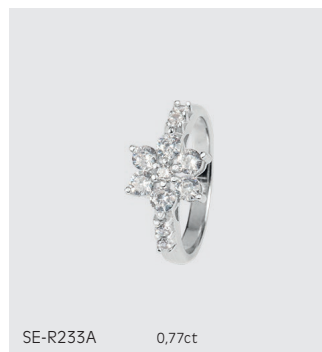




Sterling silver, 14kt Gold plated / Rhodium plated, Topaz; bracelet: 160 mm + 50 mm extension



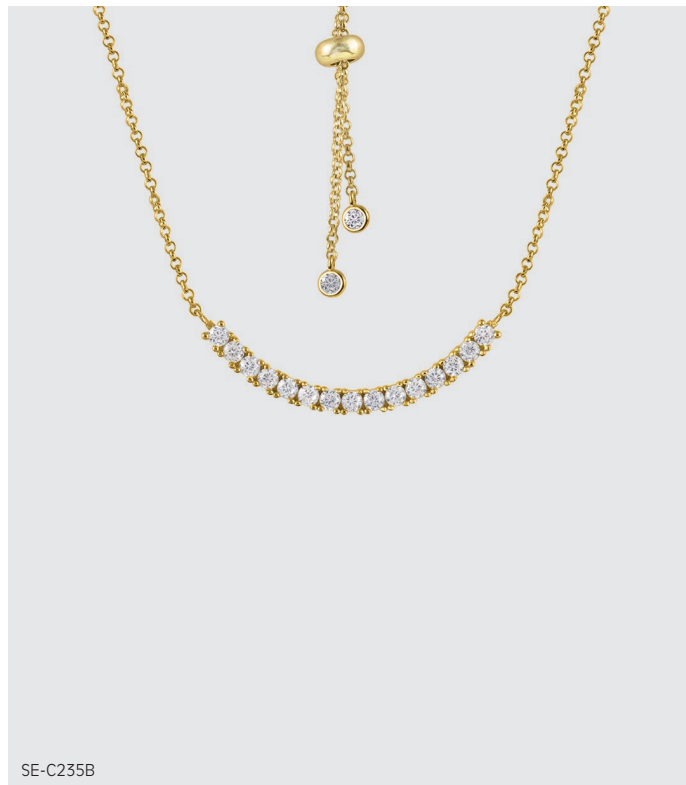
Sterling silver, 14kt Gold plated/Rhodium plated, Topaz; necklace with blossoms 11 mm ø, 400 mm + 50 mm extension; ear stud 11x25,7 mm



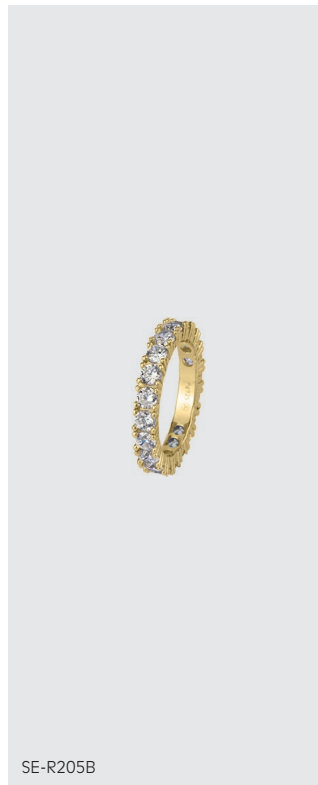
Sterling silver, 14kt Gold plated /Rhodium plated, Topaz; bracelet: 160 mm + 50 mm extension;  
Ring / sizes: 52, 54, 56, 58



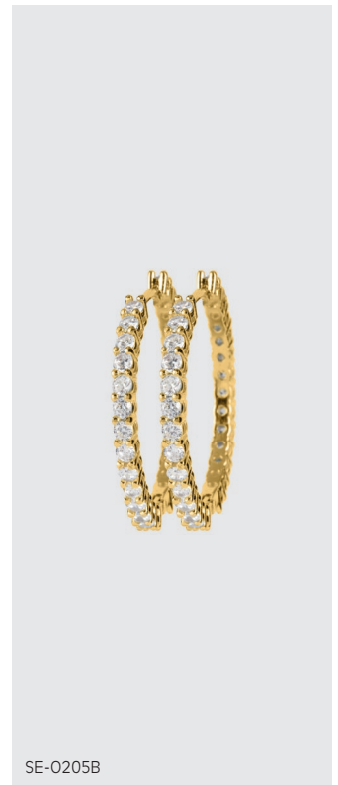
enlarged view



SE-C235B



SE-R205B



SE-O205B

Sterling silver, 14kt Gold plated, Topaz; necklace with center piece: 10x38 mm, length 590 mm; ring/sizes: 52, 54, 56, 58; hoops: 32 mm ø

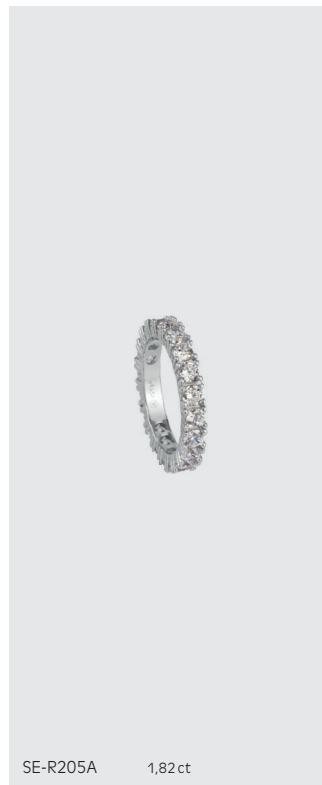


SE-C205A



SE-C235A

1,02ct



SE-R205A

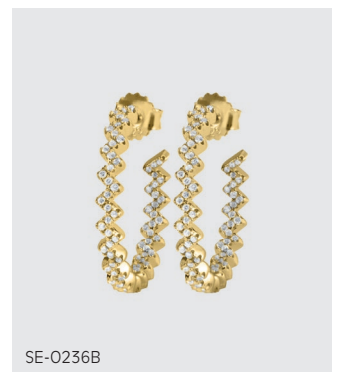
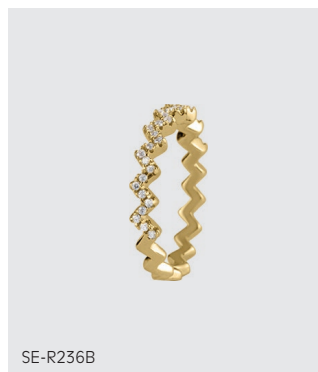
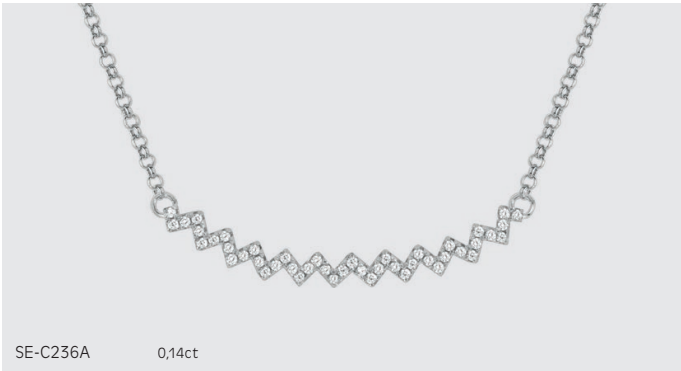
1,82 ct



SE-O205A

3,81ct

Sterling silver, Rhodium plated, Topaz; necklace with center piece: 10x38 mm, length 590 mm; ring/sizes: 52, 54, 56, 58; hoops: 32 mm ø



Sterling silver, 14kt Gold plated/Rhodium plated, Topaz; necklace with center piece: 10x37 mm, lenght: 590 mm;  
Ring /sizes: 52, 54, 56, 58; hoops: 23 mm ø



SE-B236A

0,14ct



SE-B236B

Sterling silver, 14kt Gold plated/Rhodium plated; Topaz; bracelet with center piece: 3x24 mm, length: 230 mm







Sterling silver, 14kt Gold plated/Rhodium plated, Topaz; necklace: length 400 mm + 50 mm extension, bracelet: 160 mm + 50 mm extension



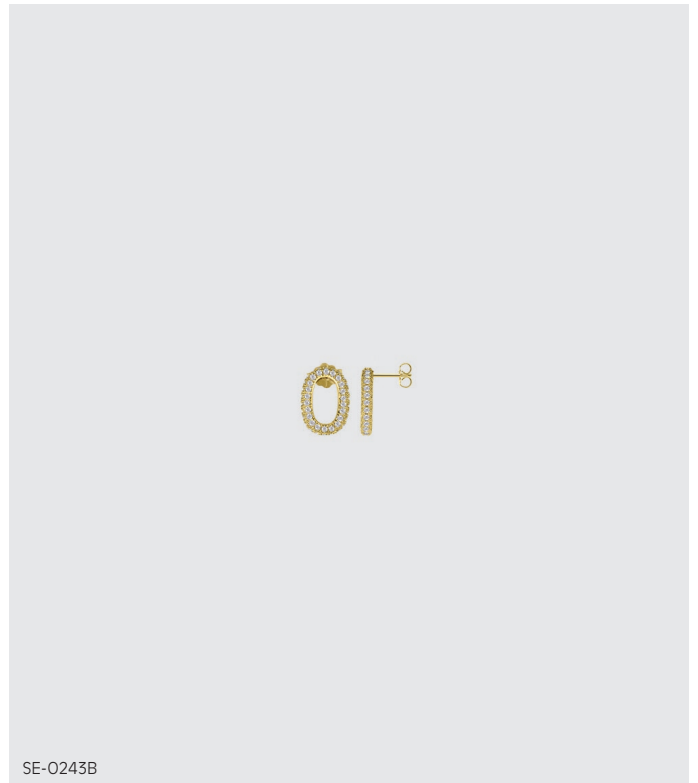
Sterling silver, 14kt Gold plated/Rhodium plated, Topaz; necklace with pendant: 36x12 mm, length: 500 mm

enlarged view



SE-0243A

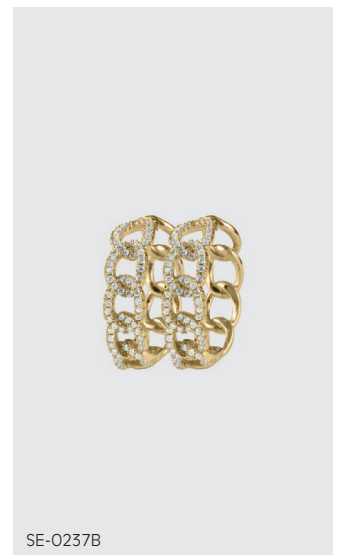
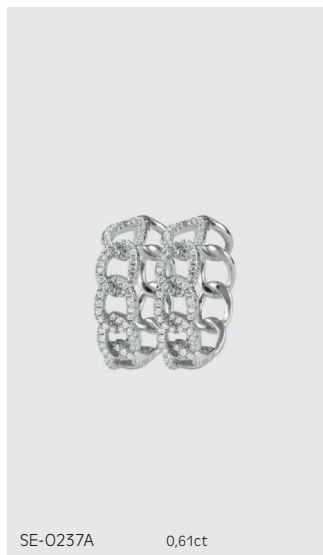
0,64ct



SE-0243B

Sterling silver, 14kt Gold plated/Rhodium plated, Topaz; ear stud: 12x8 mm.

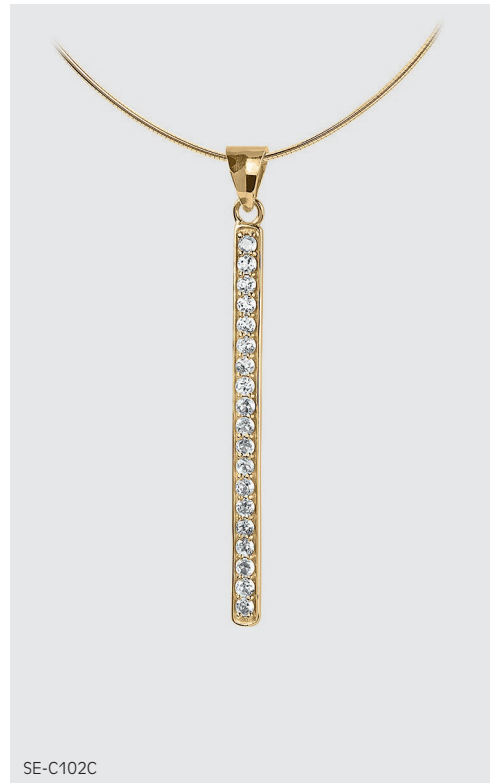
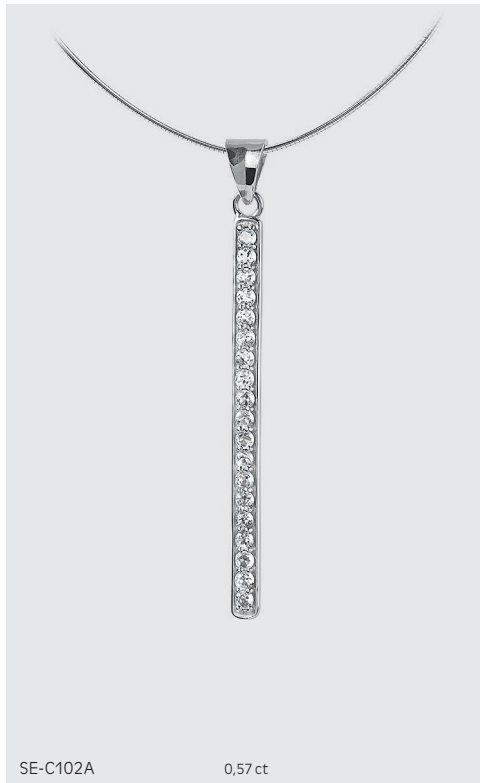




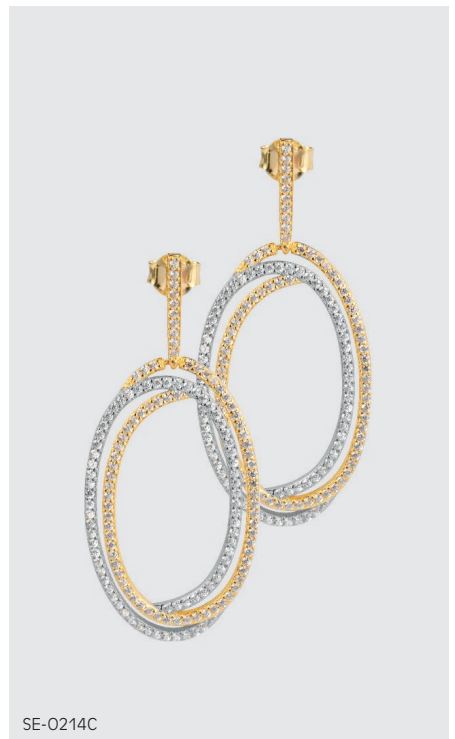
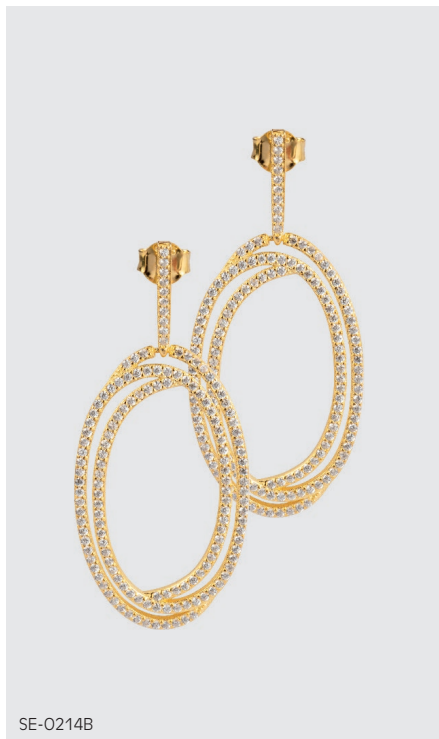
Sterling silver, 14kt Gold plated / Rhodium plated, Topaz; necklace: 500 mm; bracelet: 200 mm, ring/sizes: 52, 54, 56, 58; hoops: 20mm ø



Sterling silver, 14kt Gold plated /Rhodium plated, Topaz; pendant: 14,5 mm ø with chain; length 450 mm; ear stud: 14,5mm ø



Sterling silver, 14kt Gold plated/Rhodium plated, Topaz; **SE-C238** pendant: 25mm ø with chain: lenght 450 mm; **SE-O238** ear stud: 25x39 mm. **SE-O102** ear stud: 3,5x17 mm, **SE-C102** pendant: 3,5x50 mm with chain: lenght 450 mm



Sterling silver, 14kt Gold plated/Rhodium plated, Topaz; oval earrings: 22x39 mm



enlarged view



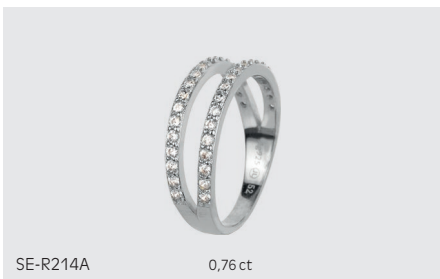
SE-C214A 0,53ct



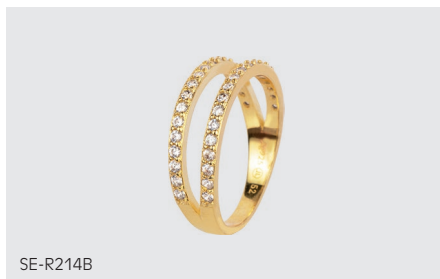
SE-C214B



SE-C214C



SE-R214A 0,76 ct

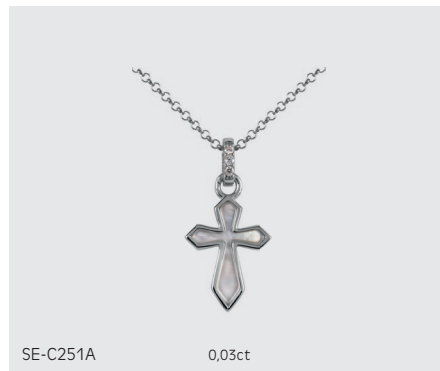


SE-R214B

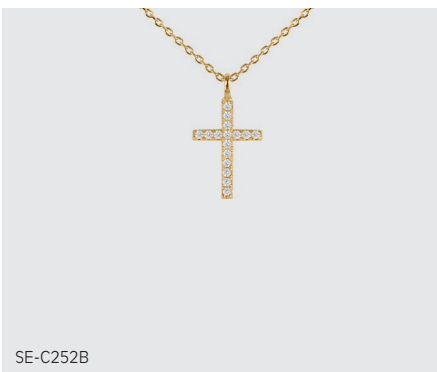
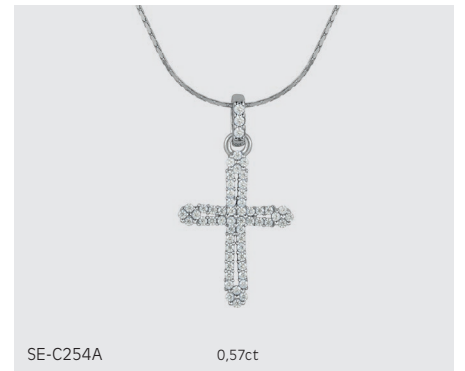


SE-R214C

Sterling silver, 14kt Gold plated/Rhodium plated, Topaz; pendant 22x39 mm with chain: length 450 mm; ring/sizes: 52, 54, 56, 58



Sterling silver, 14kt Gold plated /Rhodium plated, Topaz, Mother of Pearl; **SE-C250** pendant: 11x23 mm with chain: lenght 450 mm; **SE-C251** pendant: 11,5x22 mm with chain: lenght 450 mm



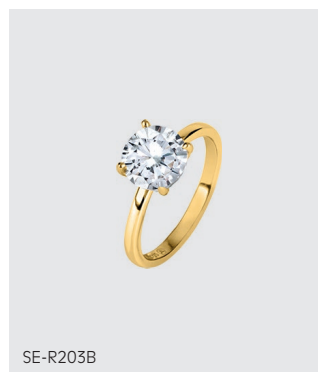
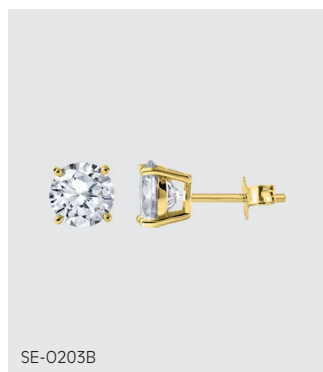
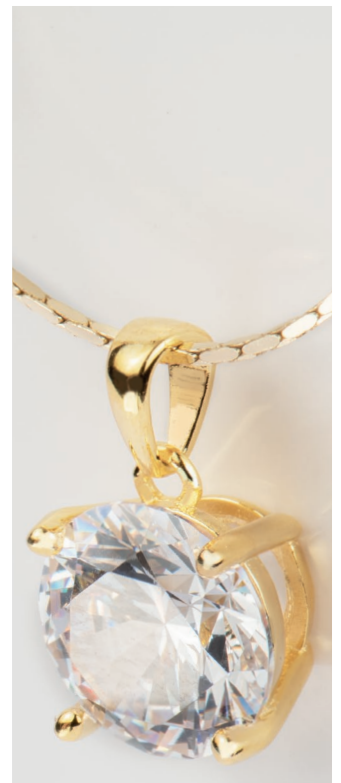
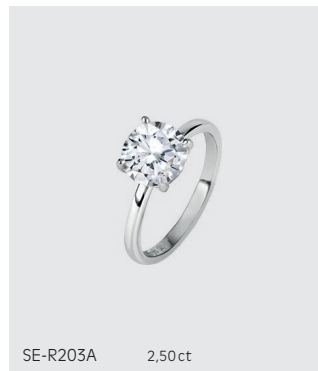
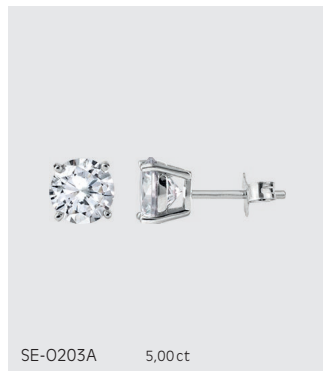
Sterling Silver, 14kt Gold plated/Rhodium plated, Topaz; **SE-C252** pendant: 8x17 mm with chain: lenght 450 mm; **SE-C253** pendant: 12x25 mm with chain: lenght 450 mm; **SE-C254** pendant: 15x27 mm with chain: lenght 450 mm



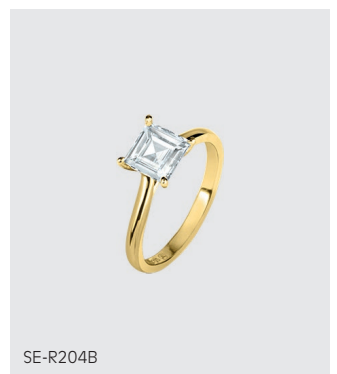
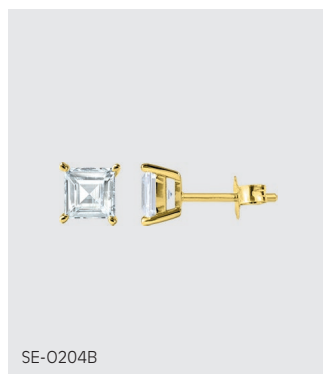
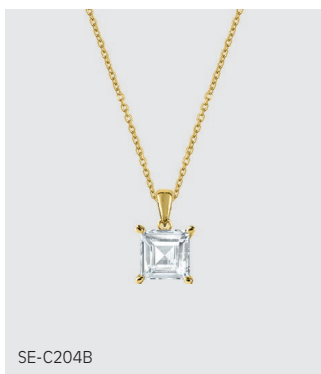
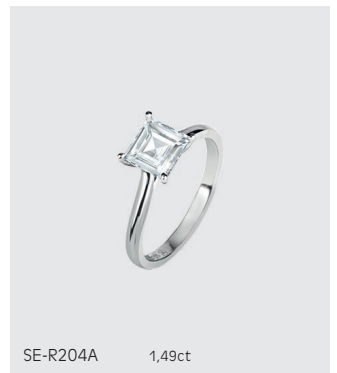
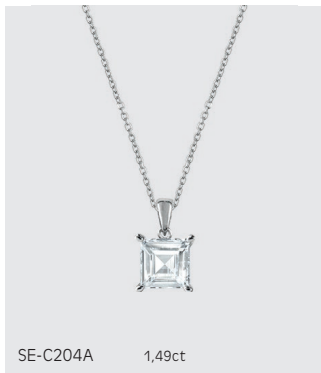
Sterling silver, 14kt Gold plated/Rhodium plated, Topaz, mother-of-pearl; **SE-C249** pendant: 18x22 mm with chain: length 450 mm  
**SE-C248** pendant: 18x22 mm with chain: length 450 mm



Sterling silver, 14kt Gold plated/Rhodium plated, Topaz; **SE-C255** pendant: 20x27 mm with chain: length 450 mm  
**SE-C256** pendant: 24x26 mm with chain: length 450 mm; **SE-C257** pendant: 20x26 mm with chain : length 450 mm



Sterling silver, 14kt Gold plated/Rhodium plated, Topaz; **SE-C203** pendant: 8x14 mm with chain: lenght 450 mm  
**SE-O203** ear stud: 8mm ø; **SE-R203** ring/sizes: 52, 54, 56, 58



Sterling silver, 14kt Gold plated/Rhodium plated, Topaz; **SE-C204** Anhänger: 6x11 mm with chain: length 450 mm  
**SE-O204** ear stud: 6x6 mm; **SE-R204** ring/sizes: 52, 54, 56, 58



ANNA CASSER  
OLYMPIC CHAMPION

Errors, price or product changes as well as color aberration caused by printing reserved © Jacques Lemans 2024